

www.jyotiinnovation.com



Unique Solution of Abrasion, Corrosion
& Cold Weld Technologies

 MADE IN INDIA

ABOUT US

We are pleased to introduce Jyoti Innovision Pvt. Ltd. as the leader in providing unique solutions for abrasion, Corrosion and Cold weld related technologies since 2008. Several years of dedicated service spread across several industries has given JYOTI Enterprise a reputation for achieving break-through results in the field of Wear, Corrosion & Erosion control. During this journey we realized that most of the companies are facing similar problems of wear&corrosion at various areas and stages of their production. Our vision is to be a leader as a Solution provider of Abrasion, Corrosion & Cold Weld technologies.

We mfg. Highly Wear resistant ceramic lining, Ceramic Line Parts, Ceramic Coating, glass flack coating, Epoxy Coatings, Ep Zinc Coating, Adhesives to bond metal-metal & Metal to concrete, Putty for Leak seal, Metal Surface regeneration & strengthening purpose.

JYOTI ABRASION RESISTANT CERAMIC COMPOUND COATING

Jyoti Innovision Has Formulated & Develop A High Abrasion & Chemical Protection Base Ceramic Compound. The Compatibility of Compound Is To Adhere With Major Metallic & Concrete Surface Area.

Silent Features

- High Abrasion Resistant
- High Temperature Resistant
- Non Machine able & Rough/Smooth Surface Finish
- Ideal For Repair & Prevention Of Surfaces
- Repair & Resurface Of Worn Out Surface Area
- Excellent Adhesion With Metal & Concrete Surface
- Protection Against Abrasive Slurry & Solid Particles
- Cold Casting& Bonding Of Metal To Metal, Metal To Ceramic
- Longer Durable Service Life Span

Application

- Apply As Erosion Resistant Coating to Protect Metal & Concrete Surface
- Repairing of Ceramic Line Parts & Components
- Ceramic Liner Gap Filling
- Development of Cold cast Parts

PHYSICAL PROPERTIES

| PROPERTIES | TROWELABLE CERAMIC COMPOUND (JTBC – SL – 99) | CERAMIC PASTEABLE PUTTY (JPP – SL – 90) | MODIFIED CERAMIC COMPOUND (JPP–SLM–99) |
|------------------------|--|---|--|
| PACK | 2 pack | 2 pack | 2 pack |
| Density | 3.2 Gram / CC | 2 . 8 Gram / CC | 2.8gm/cc |
| Curing Time | 4 – 6 Hours | 4 – 6 Hours | 4-6hour |
| Mixing Ration | 1 : 1 (1Resin :1Hardener) | 1 : 1 (1Resin : 1Hardener) | 1 : 1 (1Resin : 1Hardener) |
| Working Time | 20 – 30 Minutes | 45 Minutes | 20Minutes |
| Coverage Area | 14 Kg. / 1M2 @ 4-5 mm Thick | 10-12 Kg. / CM2 @ 4-5 mm Thick | 10-12 Kg. / CM2 @ 4-5 mm Thick |
| Machine ability | Non Machine able | Machine able | Non Machine able |
| Shore Hardness | 90 D | 85 – 90 D | 85-90D |
| Finished Surface | Rough | Smooth | Rough |
| Flexural Strength | 550 Kg / CM2 | 550 Kg. / CM2 | 500kg/cm2 |
| Water Absorption | Nil | Nil | NIL |
| Application Material | All Metals & Concrete | All Metals & Concrete | All Metals & Concrete |
| Compressive Strength | 900 Kg. / CM2 | 850 Kg. / CM2 | 850 Kg. / CM2 |
| Application Process | Troweble | Paste able | Paste able |
| Temperature Resistance | 180° C | 150° C | 150° C |



JYOTI CORROSION RESISTANT CERAMIC COTING PRODUCTS

Jyoti Innovision Has Formulated & Develop A Ceramic Based Corrosion And Abrasion Protective High Alumina And Polymer Base Coating To Ensure And To Prevent Corrosion From Acidic / Alkali, Water And Atmospheric etc.

Silent Features

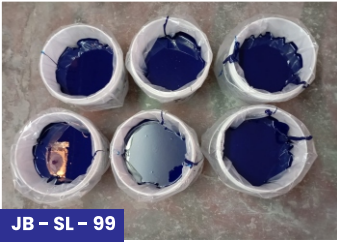
- Anti Stick
- Dust Proof
- High Temperature & Thermal Shock Resistant
- High Adhesion With Almost all cleaned surface
- High Corrosion Resistant
- Glassy / Mat Finish Surface
- Easy & Time Saving Application
- Longer Durable Service Life Span
- Odour free Application

Application Area

Acid / Alkali Area Application
Portable Water Tank Application
High Adhesion To Metallic & Concrete Surface
Highly Corrosive & For Costal Area Applications
Alternate Application Usage Of PU, Epoxy, FRP, Glass Coat, Etc. Paints & Coating,
Rubber Lining, Flooring (Brushable), Etc.

Application Ind.

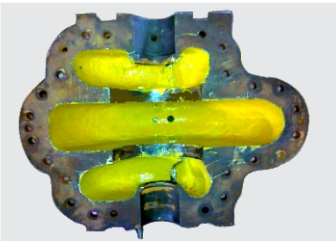
Chemical Process Storage Tanks & Vessels, Impeller, Casing, Housing, Flange, Pumps & Valves, Pipeline, Glass Lined Vessels, Cooling Tower Structure, Solar Water heater, Heat pump, Wind Mill, Mobile & Electric Tower Structure, Waste Water, Ship Propeller & Marine, Transformer, Metal Parts & Structure, Acid Proof Floor Coating, Metal Parts & Structural Frames Etc.
Applications At Sugar, Paper & Pulp, Fertilizer, Cement, Shipping, Mining, Acid & Alkali Chemical, Solar, Oil & Gas at All Engineering Plant, Equipment & Machinery Industries.



PHYSICAL PROPERTIES

| PROPERTIES | BRSHABLE CERAMIC (JB - SL - 99) | SPRAYABLE CERAMIC (JS - SL - 99) | SELF PRIMING CERAMIC EPOXY (JS-SPL-99) | CORRO COAT- GLASS FLAKE (JCC - SL - 99) |
|------------------------|-----------------------------------|------------------------------------|---|---|
| Mix Ratio | 3 : 1 (Resin : Hardener) | 3 : 1 (Resin: Hardener) | 3 : 1 (Resin : Hardener) | 3 : 1 (Resin : Hardener) |
| Curing Time | 4 To 6 Hours | 8 To 12 Hours | 8 To 12 Hours | 6 To 8 Hours |
| Working Time | 30 Min | 40 Min | 40 Min | 45 Min |
| Coverage Area | 1 Kg./1.2 Sqm. @ 0.5 to 1mm Thick | 1Kg / 3-4 Sqm @0.18-0.25 mm Thick | 1Kg / 3.5-4.5 Sqm.@0.18-0.25 mm Thick | 1 Kg./1 Sqm. @ 0.5 to 1mm Thick |
| Shore Hardness | 90 D | 85 D | 80 D | 85 D |
| Finished Surface | Glassy | Glassy /Matt | Glassy /Matt | Glassy |
| Flexural Strength | 500 Kg. / cm2 | 450 Kg. / cm2 | 450 Kg. / cm2 | 500 Kg. / cm2 |
| Water Absorption | Nil | Nil | Nil | Nil |
| Compressive Strength | 800 Kg. / cm2 | 600 Kg. / cm2 | 600 Kg. / cm2 | 800 Kg. / cm2 |
| Temperature Resistance | 150°C | 125°C | 125°C | 125°C |
| Volume of Solid | 100% | 70% | 72% | 100% |
| Recommended DFT | 800 micron | 250micron | 225micron | 1000 micron |
| KIT SIZE | 10kg | 10kg, 20kg | 10kg, 20kgs | 10kg |

Note: RECOMMENDED TO USE **JEP-ZRP-99** (JYOTI EPOXY ZINC RICH PRIMER COATING) AS A PRIMER COAT.



JYOTI EPOXY ADHESIVE

Ceramic Liner is very effective high performance perfect bonding material for proper fixing of ceramic tiles with steel plate. Normally Mortar or White Cement is normally used for fixing Tile Liners which seriously reduce the life of the surface. These mortars are poor at Chemical, Wear & Temperature resistance causing major issues

“**JYOTI ALUMINA BOND**” offers Two Parts of Epoxy bonding adhesive enriched with aluminium oxide that provides strong polymerized bond on any Ceramic to Metal & Ceramic to Concrete surface with superb strength.

“**JYOTI ALUMINA BOND**” formed with three grades:

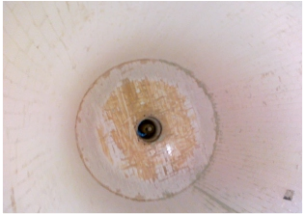
- JAB – SL – 99:** NORMAL DRY.
- JAB – SF – 99 –** FAST DRY.
- JEA – SL – 99 –** EPOXY CLEAR MULTI PURPOSE ADHEIVE.



JAB-SL-99



JEA-SL-99



Feature and Benefits

- Ceramic filled Bond
- Having the same property of parent material.
- Superior Adhesion to all clean surfaces.
- Protection against Corrosion, Abrasion etc
- Minimum Cured Time
- Economical & Effective
- Minimum thickness is required for Excellent adhesion

INDUSTRIL APPLICATION

Ball Mill Lining work, Patch work, Ceramic Lining Installation, Multipurpose industrial adhesive, Epoxy Clear table top Casting, Surface Levelling and Fixing of Ceramic to Metal & Ceramic to concrete surface giving superb strength.

| PRODUCT | JAB-SL-99 NORMAL DRY | JAB-SF-99 FAST DRY | JEA-SL-99 EPOXY CLEAR |
|------------------------|--|---|---|
| Appearance | Resin: White viscous paste Hardner: Yellow viscous paste | Resin: White viscous paste Hardner: White viscous paste | Resin: Clear viscous paste Hardner: Yellowish viscous paste |
| Density | 2.8grm/cc | 2.8grm/cc | 1.8grm/cc |
| Alumina Content. | 80% Min. | 80%Min. | 0% |
| Compressive strength | 1500 kg/cm2 | 1250kg/cm2 | 1200 kg/cm2 |
| Flexural strength | 350kg/cm2 | 300kg/cm2 | 325kg/cm2 |
| Tensile shear strength | 170kg/cm2 | 160kg/cm2 | 170kg/cm2 |
| Hardness Shore 'D' | 90D. | 85D. | 90D. |
| Max. Operating Temp | 180 to 200deg.C | 125 to 150deg.C | 100 deg.C |
| Kit Size | 10kg, 20kg, 50kgs 100kgs | 10kg, 20kg, 50kgs 100kgs | 1.8kg, 9kg, 20kgs |
| Working time 30'C | 30Minutes | 10Minutes | 40Minutes |
| Coverage. | 3-4KG/M2 @ 2MM THK. | 3-4KG/M2 @ 2MM THK. | 4-5KG/M2 @ 2MM THK. |
| Curing Time | 4-6Hours | 30min-50min | 6-8Hours |
| Ratio of Mixture | 3Resin: 2Hardner | 1Resin : 1Hardner | 1Resin : 0.8Hardner |

JYOTI SURFACE RENEWAL METAL PRODUCTS

JYOTI SURFACE RENEWAL METAL PRODUCTS ARE high strength super fine metal filled Epoxy Based cold weld material that cures at room temperature and is designed for Leak Seal, Patch work, Gap filling, rebuilding & for strong bonding with metal surfaces

GRADES AVAILABILITY

- **JSMP – CM – 99** – CERAMETAL PUTTY – General purpose leak seal product.
- **JPP – CMPC – 99** – POWDER COATING CERAMETAL PUTTY – Use before powder coating application.
- **JSMP – MP – 99** – METAL PUTTY – Repairing of metal products
- **JSMP – SP – 99** – STAINLESS STEEL PUTTY – Repairing and resurfacing of SS, Metal parts.
- **JSMP – TP – 99** – TITANIUM PUTTY – Repairing and resurfacing of High Wear & Temperature alloy steel.
- **JSMP – AP – 99** – ALUMINIUM PUTTY – Repairing and resurfacing of Aluminum parts.
- **JSMP – BP – 99** – BRONZE PUTTY – Repairing and resurfacing of Copper, Brass material.
- **JEP – SL – 75** – EPOXY PUTTY – Multipurpose putty.



FEATURES:

- Easy to apply on almost all metal with clean surface at any position /location.
- Bonds to with relative product like aluminum, steel, SS, Titanium, Brass, Copper & many other metals.
- This is machinable to metallic finish.
- Excellent Corrosion resistant properties.
- Resistant to chemicals including most acids, bases, solvents and alkalis
- Available in Stick/Paste format.

WHERE TO USE:

- Patching, Joining, Strengthening and repairing of areas especially on site where welding or brazing is difficult. Also does not require any machining or high cost setup especially when we talk of big structures & components.
- Repair of worn or fatigued metals
- Patching of castings parts, holes & Cracks
- Rebuilding pump and valve and machine bodies
- Rebuilding bearing house and shafting

APPLICATIONS:

Major applications to repair engineering equipment Ceramic, Mining, Cement, Thermal Power, Petrochemicals, Tanks, Pulp & Paper, Fertilizers, Pump, Valves, Bearing house, Transformer, Shaft, and wherever Solutions are required for Surface rebuilt or repairing work is required.





JYOTI INNOVISION PVT. LTD.

301, 3rd Floor, Milestone, Opp. Reliance Smart,
Near Drive in Cinema, Thaltej, Ahmedabad-380054, Gujarat, India.

☎ +91 79 4895 9666 ☎ +91 90999 09825/28 +91 83200 00497

✉ sales@jyotiinnovision.com 🌐 www.jyotiinnovision.com

